

REV	DATE	DRAWN/CHKD	DESCRIPTION	ASSEMBLY PART NUMBER	MATERIAL AND FINISH
A	28MAY99	RJB	PRN: M1-96	M1-2A-13-XX (NON-LOCKING)	SEE TABLE 1
B	20DEC99	RJB	PRN: M1-102	M1-2A-23-5 (LOCKING)	SEE TABLE 2
C	06JAN2003	VNI/AJH	PRN: P2002-0934		
D	11MAY2007	MDY	PRN: P2007-0635		
E	10JUL2019	CMS/CTG	PRN: P2019-1719		

MILLIMETERS
ALL DIMENSIONS WITHOUT TOLERANCES ARE FOR REFERENCE ONLY.

A3 PAPER SIZE
THIRD ANGLE PROJECTION

NOTES FOR NON-LOCKING ASSEMBLIES ONLY:

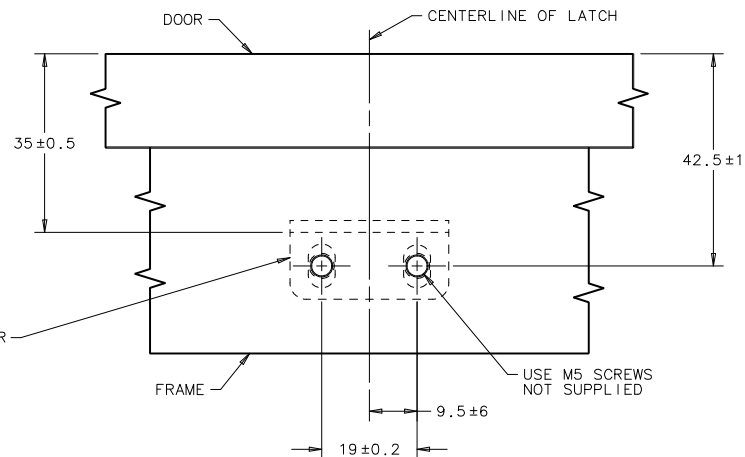
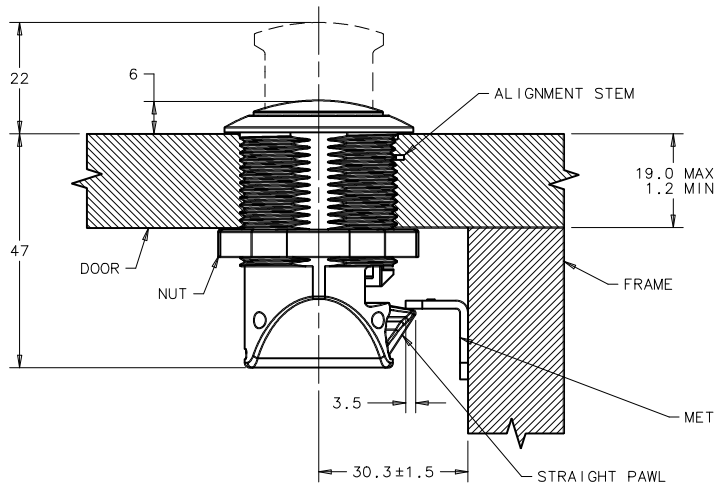
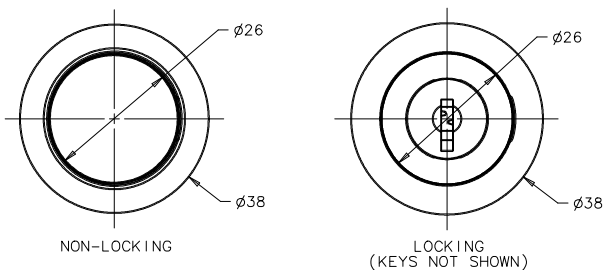
- A. PART NUMBER FINISH/COLOR KNOB MATERIAL
- | | | |
|-------------|--------------------------------------|--------------|
| M1-2A-13-1 | CHROME FINISH HOUSING AND KNOB | ABS |
| M1-2A-13-2 | MATTE CHROME FINISH HOUSING AND KNOB | ABS |
| M1-2A-13-5 | BLACK HOUSING AND KNOB | PC/ABS BLEND |
| M1-2A-13-9 | CHROME HOUSING/GOLD KNOB | ABS |
| M1-2A-13-10 | GOLD HOUSING/CHROME KNOB | ABS |
| M1-2A-13-14 | RED HOUSING AND KNOB | PC/ABS BLEND |
- B. INTERNAL CYLINDER IS WHITE FOR PART NUMBERS M1-2A-13-1, M1-2A-13-2, M1-2A-13-9 AND M1-2A-13-10
INTERNAL CYLINDER IS BLACK FOR PART NUMBERS M1-2A-13-5 AND M1-2A-13-14

TABLE 1: NON-LOCKING ASSEMBLY

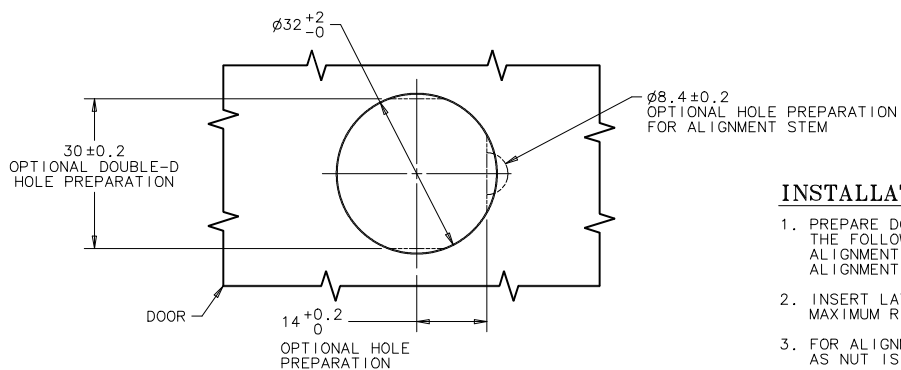
COMPONENTS	MATERIAL	FINISH
HOUSING	PC/ABS BLEND	SEE NOTE A
KNOB	SEE NOTE A	SEE NOTE A
INTERNAL CYLINDER	ACETAL	SEE NOTE B
PAWL	GLASS FILLED NYLON	BLACK
NUT	GLASS FILLED NYLON	BLACK
SPRING - PAWL	304 STAINLESS STEEL	PASSIVATED
SPRING - KNOB	304 STAINLESS STEEL	PASSIVATED
KEEPER	304 STAINLESS STEEL	PASSIVATED

TABLE 2: LOCKING ASSEMBLY

COMPONENTS	MATERIAL	FINISH
HOUSING	PC/ABS BLEND	BLACK
KNOB	PC/ABS BLEND	BLACK
INTERNAL CYLINDER	ACETAL	BLACK
PAWL	GLASS FILLED NYLON	BLACK
NUT	GLASS FILLED NYLON	BLACK
LOCKPLUG	GLASS FILLED NYLON	BLACK
LOCK MEMBER	GLASS FILLED ACETAL	BLACK
SPRING - PAWL	304 STAINLESS STEEL	PASSIVATED
SPRING - KNOB	304 STAINLESS STEEL	PASSIVATED
KEEPER	304 STAINLESS STEEL	PASSIVATED
2 KEYS (NOT SHOWN)	BRASS, NICKEL PLATED	



DOOR/FRAME PREPARATION - FRAME DETAIL



DOOR/FRAME PREPARATION - HOLE DETAIL

INSTALLATION INSTRUCTIONS:

1. PREPARE DOOR AND FRAME AS SHOWN. THE FOLLOWING OPTIONAL PANEL PREPARATIONS MAY BE USED TO ENSURE LATCH ANTI-ROTATION: ALIGNMENT STEM HOLE FOR PANELS THICKER THAN 6.4 OR A DOUBLE-"D" HOLE. ALIGNMENT STEM FOLDS AWAY IF ROUND HOLE PREPARATION IS USED.
2. INSERT LATCH THROUGH HOLE AND TIGHTEN NUT (38 ACROSS FLATS). MAXIMUM RECOMMENDED TIGHTENING TORQUE IS 4.2 N·m.
3. FOR ALIGNMENT STEM USAGE, PUSH ALIGNMENT STEM INTO SEMICIRCULAR HOLE AND HOLD IN PLACE AS NUT IS TIGHTENED.
4. INSTALL KEEPER, IF NECESSARY. ADJUST KEEPER TO ELIMINATE ANY GAP BETWEEN DOOR AND FRAME.