



IBEX 2021 | CATALOG



## SPECIALTY | SPEAKERS

### FS1

Floating Speakers

#### FEATURES

- Wireless Bluetooth streaming
- Connect multiple FS1 speakers remotely via 5 GIGA Wifi
- No Wifi router required
- Inductive charging system
- Floating Speaker
- 15 watts RMS 50 watts Max
- 6-hour battery life at medium volume
- IP67 waterproof  
*(Not designed to be played fully submerged)*



## SP201RG

### Round Pop-up Spa Speakers

SP201RG is a round pop-up speaker designed specifically for the demanding spa environment. Elegant styling and rugged construction combined to provide years of enjoyable trouble-free service. All materials used are thoughtfully selected to resist spa chemicals, withstand UV exposure and block corrosion. 360° rotation allows music to be directed to where you want it, in or out of the spa.

#### FEATURES

- Waterproof Design
- 360° Rotation
- 2-Channel Speaker
- Precise Fit Finish





## SPECIALTY | SPEAKERS

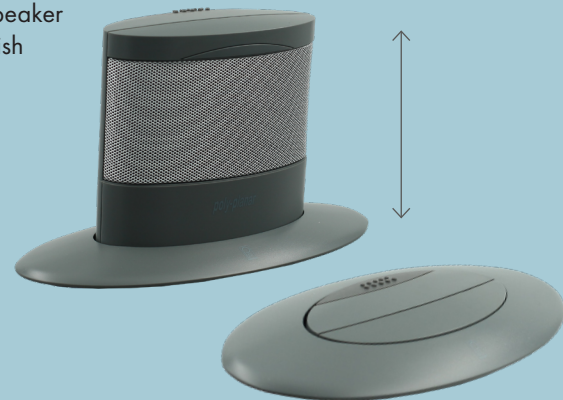
### MA7020G

Oval Pop-up Spa Speaker

MA7020 is an oval pop-up speaker designed to provide a waterproof speaker for a spa. Pop-Up when in use and pop-down when not in use or when the spa is covered. Materials used are carefully considered to resist spa chemicals, corrosion and UV rays.

#### FEATURES

- Waterproof Design
- 2-Channel Speaker
- Precise Fit Finish
- Flush Mount





## SFS101B

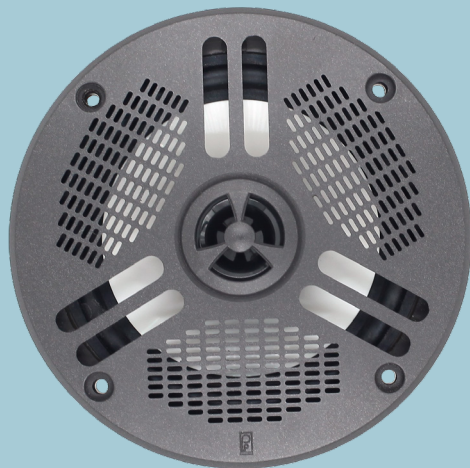
### Flip-Up Spa Spaekee

The PolyPlanar SFS-101 Flip-Up Spa Speakers are designed to provide a waterproof speaker for spa skirt installation that can be used while in the spa and for patio listening while the spa is covered.

#### FEATURES

- Sleek styling purpose built for spa skirt mounting
- Easy Installation
- Two drivers in each flip-up speaker
- UV resistant ASA plastic construction for years of trouble free service
- Heavily built S/S hinge, all metal parts either made from S/S or coated for corrosion resistance





## MA4052

Spa Speakers

### FEATURES

- 1 ¼" piezo tweeter
- 5.3 oz driver magnet
- Audio-signal-synched LED performance
- Socket head capped screws
- Max power: 60W
- Impedance: 4 Ohm
- Self-draining speaker cone will not collect water regardless of mounting
- Available in dark gray color speaker (Part# MA4052LG1)
- SOLD IN EACH (1 SPEAKER)



## SB44

Spa Speakers

### FEATURES

- 4 ohm impedance
- mid to Full frequency audio range
- 35 watt RMS power rated
- Mounts in 50mm hole with included epdm gasket and 4 chrome plated fasteners
- Mounting depth from mounting surface – 27mm
- Wired terminals 115 mm long with male and female insulated spade terminals
- Front grill dimensions 62mmX 62mm
- Available in White, Dark Gray color (Part# SB44-G1) and in Light Gray color (Part# SB44-G2)



# OUTDOOR | SUBWOOFERS

## MS55/56

Compact Box Subwoofer

### SPECS

- 100 Watts RMS
- 40Hz
- 5.25"

### FEATURES

- Dual Voicecoil, high-excursion
- High density, UV stable enclosure
- Water resistant
- Bass-reflex, high-efficiency acoustic design
- Side vented output ports
- Compact size and molded-in mounts provide for convenient installation nearly anywhere.
- Acoustically matched for use with Poly-Planar ME60 and ME400D amplifiers or can be used with any amplifier 25 - 100 watts.



[polyplanar.com](http://polyplanar.com)

The MS55/56 subwoofer is a compact, high efficiency bass enclosure optimized for marine applications. It's small size enables it to be easily mounted below seats, under the gunwale area, behind the instrument panel, or any convenient location. The MS55/56 is a self contained bass unit requiring no cutting of panels or holes in the boat interior. It produces solid, deep bass extending down to 40Hz and is the perfect addition to any audio system.

MA50G, MA3013



## MA50G

Oval Grill Speakers

### FEATURES

- 4 ohm impedance
- Full frequency audio range
- 140 peak power/pair
- Threaded body with backing nut
- Driver and/or grill can be replaced from front side for easy future service
- Mounts in 66mm/2.6" hole with included gasket and backing nut
- Mounting depth from mounting surface – 37mm/1.5 inches
- Front grill dimensions 121 mm X 89mm/4.75" X 3.5"



## MA3013

3" Cone Speakers

### FEATURES

- 120 peak power/pair
- Flush mount
- Low magnetic field
- Waterproof construction throughout.
- Powder coated aluminum grill
- Mounting hardware & speaker wire included
- Quick connect terminals
- Available in white or metallic gray



# VHF EXTENSION | SPEAKERS

MB21, MB41

## MB41

4" VHF Extension Speaker

### FEATURES

- Surface Mount
- Completely waterproof and corrosion-proof
- Features stainless steel grills, sturdy plastic frames, polypropylene speaker cones and teflon-coated wires
- Ideal for use as a VHF remote
- Also available in white color speaker (Part# MB41W)
- SOLD IN EACH (NOT SOLD IN PAIRS)

## MB21

2" VHF Extension Speakers

### FEATURES

- Surface Mount
- Completely waterproof and corrosion-proof
- Features stainless steel grills, sturdy plastic frames, polypropylene speaker cones and teflon-coated wires
- Ideal for use as a VHF remote
- Also available in white color speaker (Part# MB21W)
- SOLD IN EACH (NOT SOLD IN PAIRS)



[polyplanar.com](http://polyplanar.com)



## OCEAN SERIES, HIGH PERFORMANCE MARINE SPEAKERS

The Ocean Series high performance speakers surround your boat with clear, crisp sound and cool blue light. These 2-way coaxial speakers are low profile, waterproof and LED lit.



# OCEAN SERIES | SPEAKERS

MA-OC8, MA-OC6



## MAOC8

8" Waterproof LED Lit Speakers

### FEATURES

- Integral blue LED lighting.
- IPX6 waterproof rating.
- Rugged mechanical construction using materials resistant to sun, salt and corrosion.
- 2-way design with independently-mounted crossover circuit.
- 8-inch cone high power long-excursion woofer with 35mm voice coil.
- 3-year warranty.
- Peak power rated at 500 Watts/pair.

## MAOC6

6.5" Waterproof LED Lit Speakers

### FEATURES

- Integral blue LED lighting.
- IPX6 waterproof rating.
- Rugged mechanical construction using materials resistant to sun, salt and corrosion.
- 2-way design with independently-mounted crossover circuit.
- 6.5-inch cone high power long-excursion woofer with 35mm voice coil.
- 3-year warranty.
- Peak power rated at 480 Watts/pair.

[polyplanar.com](https://polyplanar.com)



## HIGH POWER, HIGH PERFORMANCE MARINE SPEAKERS

Platinum Series speakers are high-powered performers that offer superior sound for discriminating listeners who demand the very best quality audio. They are the first truly waterproof, full-range marine speakers to offer the performance of a home stereo system.

Constructed to withstand the most severe effects of sun and saltwater, Platinum speakers are ideal replacement or upgrade speakers for those who want increased audio power, smooth response and minimum distortion.

With a sleek, contemporary style that is beautifully proportioned and meticulously finished, Platinum Series speakers complement any salon, stateroom or above-deck mounting. Aluminum grills, coated internal wires, polypropylene cones and mylar tweeters assure you of long-lasting performance and good looks. These speakers are guaranteed to provide the best sounding marine audio in their class. Available in white only.

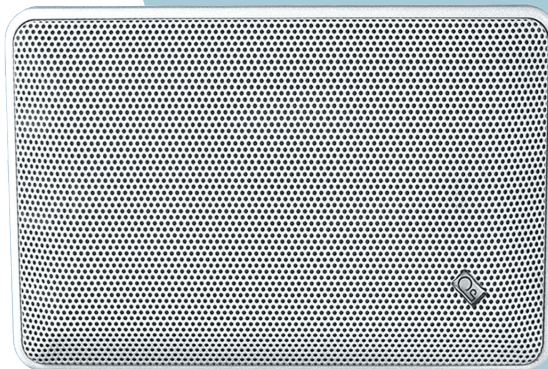
# PLATINUM SERIES | SPEAKERS

MA5500, MA905

## MA5500

Platinum Panel, Low Magnetic Field Speaker

These low magnetic field three-way speakers have a unique dual woofer design that handles up to 280 watts/pair. The perfect upgrade for the popular Slim Line Speakers.



## MA905

Platinum Panel, Low Profile Speaker

The MA905 panel speakers feature a shallow 1" mounting depth for those tight places. The two-way speakers handle peak power of 400 watts/pair. Available in black and white.





# TITANIUM SERIES | SPEAKERS

MA8506, MA8505

[polyplanar.com](http://polyplanar.com)

## TITANIUM SERIES MARINE SPEAKERS

The Titanium Series are waterproof, ultra low magnetic field 200 watt/pr. speaker is available in white or black color to compliment the exterior or interior of any yacht .

These three way speakers are perfect for replacement or upgrade of existing speakers and the magnets will not interfere with navigation equipment. Rated Frequency: 55Hz to 20KHz.

### MA8505

5" Speakers

#### FEATURES

- 5" Speakers
- Colorfast plastic frame with stands UV rays.
- Anti-magnetic design
- Waterproof construction throughout.
- Rugged powder coated aluminum grill.
- 3-way design with mylar tweeter & midrange.
- Available in white or black color



### MA8506

6" Speakers

#### FEATURES

- 6" Speakers
- Colorfast plastic frame withstands UV rays.
- Anti-magnetic design
- Waterproof construction throughout.
- Rugged powder coated aluminum grill.
- 3-way design with mylar tweeter & midrange.





## MID-POWER BASIC DESIGN MARINE SPEAKERS

Available in four sizes and your choice of black or white, the MA4000 series of low magnetic field speakers are ideal as initial, upgrade, or replacement speakers.  
Available in white or black.



# PERFORMANCE SERIES | SPEAKERS

MA4054, MA4055, MA4056

## MA4054, MA4055, MA4056

Integral Grill Speakers



MA4054

MA4055

MA4056



# BOX SPEAKERS

MA840, MA9020, MA9060

## MA9020

Gunwale Mount Speaker

Mount these full-sized speakers out of the way under the gunwale, where they're protected from the elements, yet close enough to deliver rich, full sound. The molded, one-piece plastic grill protects the speaker components from splash and spray. The two-way vented port design offers full range response. Peak power 200 watts /pair.

## MA9060

Box Speakers

Low magnetic field, full range, bass reflex box speakers offer top quality sound. Will handle 200 watts/pair. Gimbal mounting bracket included. Available in white.



## MA840

Subcompact Box Speakers

Ideal for locations where other speakers won't fit. Only 4" x 4". Speakers feature low magnetic field and will handle 80 watts/pair. Stainless steel grill and bracket. Available in white.



[polyplanar.com](http://polyplanar.com)



## MRD87i AM/FM/MP3 IPX 6 Marine Radio

IPX6 marine grade digital media entertainment system with ultimate audio 4X45 sound.

The MRD87i is a full-featured waterproof stereo receiver designed specifically for the marine environment

### SPECS

- 4 channel X 45 watt power out
- 2 X 16 character digital display.
- Cutout: 7-1/8" X 2-1/8" X 7-5/16" deep clearance
- Face: 7-9/16" X 3-1/8"

### FEATURES

- SiriusXM-Ready™
- Made for iPhone® & iPod®
- Bluetooth
- USB music player & USB charger
- SD card reader
- AM/FM digital tuner
- NOAA weather band
- USB and 3.5mm aux input inside drawer/dock
- Front and rear RCA line out
- NMEA 2000® certified
- Wireless IR remote available (sold separately)

# OUTDOOR | STEREO

MRD87i, GSMR30



**MRD87i**  
DMD dock

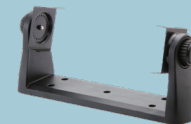
### ACCESORIES



**ACX11**  
USB/AUX Accessory  
Extension Cable



**MRR21**  
Wireless Remote



**GM-MRD80**  
Gimbal Mount



**RM10**  
Overhead Radio  
Mount



## GSMR30 Marine Radio

MP4/MP3/Photo Playback Gauge Series  
Marine Radio

### SPECS

- 4 channel
- Full Range, Class A/B
- 45W x 4 @ 4Ω
- IPX5 Waterproof

### FEATURES

- Bluetooth Audio Streaming
- Easy Pairing with Auto Reconnect
- AUX-In
- USB-In for Music, Movie and Photo
- 18 Preset AM/FM Stations
- Compatible with Audio Output of Smartphones and MP3 players
- 1 Video Output, 1 Subwoofer Output, 1 Pre-Amp Output



Poly-Planar Marine Amplifiers are waterproof (IP65) units designed for harsh marine environments. These amplifiers can be used as stand alone units or as part of an expansion system.



### ME70BT

Bluetooth IPX6 Marine Amplifier with Keypad Display

#### FEATURES

- Remote display keypad
- 4X45 audio power out
- 100 meter Bluetooth range
- iPhone®/Android® charging
- USB music player
- AUX input
- NMEA 2000® certified
- Multiple EQ preset options
- Backlit 3 line display with adjustable illumination



### ME60BT

Bluetooth AMP  
with Waterproof Control Pad

#### FEATURES

- 4 channel X 30 watt power out
- Waterproof control pad with 20' of cable

## OUTDOOR | AMPLIFIERS

ME70BT, ME60BT, ME400D, ME60, ME52, ME6005D



### ME52

Expansion Amplifier

#### FEATURES

- 2 channel X 25 watt power out
- Powers up to (4) 4ohm speakers
- Accepts line level or speaker level inputs
- Separate waterproof volume control (10 ft lead)
- This unit is designed for adding additional speakers to an existing system or as a separate zone amp.





### ME60

Audio Amplifier

#### FEATURES

- 4 channel X 30 watt power out
- 30 watts per channel
- Powers up to (8) 4ohm speakers
- Internal distortion limiting circuits
- Dedicated gain level control
- External volume control with ON/OFF switch included
- Water resistant design for marine use
- Rear channels switchable from full range to powered sub out.



### ME6005D

Audio Amplifier

#### FEATURES

- 4 x75 and 1 x 300 RMS @2ohms
- High efficient full range class D operation
- Water proof IP5 up class water proof cosmetic
- Pigtail wire harness and connection
- Frequency range:20Hz-20KHz
- 2 Ohm working stable
- Selectable high level and low level input
- DIP switchable crossover
- Low pass filter: 120Hz/80Hz
- High pass filter:50Hz/250Hz for 2 channel model
- Input sensitivity:200mV-9V
- Gain control for front and rear channel
- Switchable mode for 4 channel model:2CH/4CH
- Subsonic for mono channel model:16Hz-47Hz
- Signal sensing and 12V remote out short thermal and overload protection

## STEREO ACCESSORIES STEREO ENCLOSURES, REMOTE CONTROLS

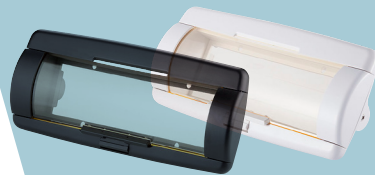
Protect your stereo from the harsh marine environment. These gasketed covers are designed to keep moisture away from your stereo. All accommodate dual post, removable and DIN-style stereos. The WC700 Housing includes two 3" integrated waterproof speakers. (Stereos not included).



**WC400 Enclosure**



**WC400B**



**WC4 Splash Cover**



**WC3 Panel Mount**

## STEREO | ENCLOSURES

RM10, WC400, WC400B, WC4, WC3



### **RM10**

Overhead/Under Dash Stereo Housing

The new Poly Planar RM-10 Radio Mount is designed to accommodate today's larger front panel format Marine radios as well as older DIN style and Post mount. Made from heavy wall ABS plastic, the RM-10 has room for all the accessory cables found on the newest radios. Accepts Poly Planar, Sony, Jensen, Marine AV and even Clarion CMD4!

Overall Dimension (in inches) - 11.94 x 10.44 x 4.38

Inside Dimension (in inches) - 10.08 x 8.43 x 3.25



# SPEAKER COVERS

SBC1, SBC2, SBC3

Provide protection to the back side of speakers, behind a bulkhead or wall. Covers wire connections and protects the speaker cones.

## SBC1

- 7-1/8" diameter
- Slotted mounting holes match stud locations on most speakers
- Covers wire connectors
- High impact white ABS
- Compact size works with Poly-Planar most speakers.



## SBC2

- 8-1/2" diameter
- Hide and protect valuable speakers
- High impact white ABS
- Compact size works with Poly-Planar most speakers.

## SBC3

- 11" diameter
- Hide and protect valuable subwoofers
- High impact white ABS
- Compact size works with Poly-Planar most speakers.,



### IC3.5PM

MP3 Adapter

The IC3.5PM allows you to connect your MP3 player, iPod® or satellite radio to any audio device with RCA inputs. It features a waterproof panel/dash mount with rubber cover and a 4' extension cable. Also included is a 4' patch cord for connecting MP3 player to adapter plug.



### ACX11

Accessories Extension Cable

ACX11 is a USB/AUX accessory input extension cable. It provides easy access to your accessory inputs. It features a waterproof panel/ dash mount with rubber cover and 6.5 foot extension cable.



## STEREO ACCESSORIES

IC3.5PM, ACX11, USBPM2

### USBPM2

Waterproof Dual-Port

An excellent option for marine, ATV, golf cart or automotive applications. With an output of up to 5VDC, the charger can charge smart phones, tablets and GPS devices. The USB charger supports express charge mode for Android and Apple devices. The dualport USB design allows user to charge up two devices at the same time. The product is IP-66/CE/FCC/RoHS rated.

#### FEATURES

- USB TYPE C 18 Watt Fast Charge
- USB 3.0 Fast Charge
- Digital battery voltage display
- Translucent cover to allow battery voltage to be monitored even when not in use.





# INSTALLATION CONSIDERATIONS

[polyplanar.com](http://polyplanar.com)

## Stereo Installation Considerations

Give your stereo some air. Properly installed, your stereo will be well ventilated so the heat sink can dissipate heat into the surrounding air. Make sure the unit is properly sealed to the dash so water cannot leak into the chassis or the connectors behind the dash. Pay particular attention if your unit is mounted below instrument gauges, as they are a common source of leaks. Always keep the front panel firmly closed. Use only UL-approved power connections and fuses with the proper ratings. The yellow memory B+ requires a 1A fuse (supplied); the red ACC line requires a 10A fuse (supplied).

## Speaker Installation Considerations

Speakers are directional—point them at your ears. When mounting, consider where your ears will be when listening, and point the speakers' central axis in that direction. Don't choke your sound. Flush-mount speakers need air behind them. More air is better. Allow at least one cubic foot of air behind your speakers so as not to compromise the bass response. Separate the air in front of the speaker from the air behind it. If there is no baffle (wall) separating the front of the speaker from the back, the positive air pressure at the front of the cone will rush around to fill in the vacuum behind the cone, instead of reaching your ears, which dramatically reduces bass response. This "free air response" explains why unmounted speakers may sound "tinny."

Don't blow your speakers. Make sure your speakers can handle more power than your stereo can produce. The power specification on a stereo is the maximum amount of power the stereo will produce. The power specification on a speaker is the maximum amount of power the speaker can handle. If the stereo can produce more power than the speakers can handle, you may blow your speakers at high volume. Use RMS power for comparison purposes. Compare the per channel power of the stereo with the per speaker power of the speakers. You cannot gain sound quality by increasing the maximum power handling of your speakers. A one-watt signal will not sound any better on 100-watt speakers than it will on 10-watt speakers.

Use proper wiring. Use 18-gauge wire to connect your stereo to your speakers. Doorbell wire works well, it's inexpensive, comes in pairs, and isn't stranded, so there's less surface area to corrode. Seal all wires between the insulation and soldered area. Make sure positive terminals on speakers are matched with the positive side of the stereo output.



119 Fabricators St # A Summerville, SC, 29483-8694 | [sales@polyplanar.com](mailto:sales@polyplanar.com) | [polyplanar.com](http://polyplanar.com)