



The Way To Fish®

60
YEARS

Fishing & Outdoor Products

HIGH PERFORMANCE DOWNRIGGERS

*“Fastest retrieval
rates in the World”*



Model 2106 HP

Standard Features

- Stainless steel jacketed adjustable rocket launcher rod holder
- 1/2" Kevlar drive belt by Optibelt™ - The same belts used by superior European auto manufacturers
- Includes weight storage hook
- Fully assembled and tested
- Illuminated, resettable, sealed and silent digital line counter
- Unbeatable pulling power lifts 20 lb. weights with ease at 260 ft./min. - 12 lb. weights lift at 304ft./min
- Auto-Stop when using Scotty line beads
- Downrigger fishing instruction booklet
- 300 ft. of 180 lb. HP Test, stainless steel downrigger wire
- Clutch brake with the largest braking surface in the industry allows for ultra fast speeds
- Tilt-up boom
- Full saltwater protection

Weight	12 lb.	15 lb.	20 lb.
Retrieval Speed	304 ft./min.	295 ft./min.	260 ft./min.

See page 10 for optional downrigger mounts



Each Scotty Downrigger comes with the Scotty limited Lifetime Warranty. The best warranty in the industry is backed by 60 years of manufacturing know-how and unbeatable customer service.



- 2101**
- 30" long, 1 1/4" dia. stainless steel boom
 - 16 Position swivel pedestal mount
 - Adjustable stainless steel jacketed Rocket Launcher rod holder
 - Power Grip Plus line release
 - 300 ft. of 180 lb. HP Test, stainless steel downrigger wire
 - Weight Storage Hook



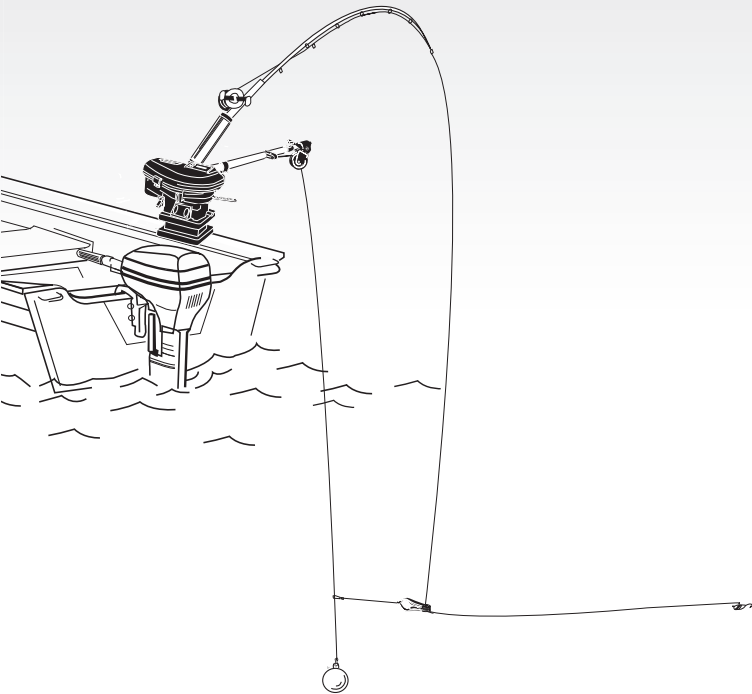
- 2106B**
- 300 ft. of 250lb. test Premium Dyneema® Fiber Braided Downrigger Line.
 - 36"- 60" long, 1 1/4" dia. telescoping stainless steel boom (collapses to 36" for storage)
 - 16 Position swivel pedestal mount
 - Adjustable stainless steel jacketed Rocket Launcher rod holder
 - Power Grip Plus line release
 - Weight Storage Hook



- 2106**
- 36"- 60" long, 1 1/4" dia. telescoping stainless steel boom (collapses to 36" for storage)
 - 16 Position swivel pedestal mount
 - Adjustable stainless steel jacketed Rocket Launcher rod holder
 - Power Grip Plus line release
 - 300 ft. of 180 lb. HP Test, stainless steel downrigger wire
 - Weight Storage Hook



- 2116**
- 36" - 60" long, 1 1/4" dia. telescoping stainless steel boom (collapses to 36" for storage)
 - 16 Position swivel pedestal mount
 - Dual adjustable stainless steel jacketed fully adjustable Rocket Launcher rod holder
 - 2 Power Grip Plus line releases
 - 300 ft. of 180 lb. HP Test, stainless steel downrigger wire
 - Weight Storage Hook



Fight the fish, not the fishing gear!

Downriggers were created for one principal reason: to allow fishermen to troll their lures at a specific depth. Years of testing and practical use had shown that a moving bait or lure in the water, trolled at the depth where fish were present, was the best way to ensure a hookup and get results. Downriggers improved both trolling results, and the fun factor - they put the 'sport' back in sport fishing.

The earliest downriggers were very simple in form, generally consisting of a spool of wire mounted to the boat with a heavy weight hung on the end of the wire. The lure or bait was attached directly to the downrigger weight and did not release when a fish struck - the fisherman had to wind up both the weight and the fish.

This concept of deep trolling became popular with sport fishermen when the idea of attaching a rod to the downrigger, by means of a release clip, was introduced.

A release clip is attached to the wire and then the fishing line from the rod is clipped into the release. The downrigger weight is then lowered to precisely the depth required. When a fish hits, the line is released from the downrigger wire, leaving the heavy weight on the downrigger. The angler is then free to fight the fish on the rod and reel alone, without the added drag of heavy lines and trolling weights used in the past.

Scotty introduced its first downrigger over 35 years ago and now produces the most complete range of downriggers and accessories in the world.

Depthpower Downriggers



Model 1106 Depthpower



Each Scotty Downrigger comes with the Scotty limited Lifetime Warranty. The best warranty in the industry is backed by 60 years of manufacturing know-how and unbeatable customer service.



Scotty Depthpower Electric Downriggers have reached the highest performance and reliability standards ever, while remaining competitively priced. Thousands of fishermen now enjoy the superior speed, power and years of reliability that only Scotty offers. From custom designed marine motors to the final quality control tests, Scotty performance is unmatched in the industry.

Standard Features

- Kevlar belt driven
- Spray-protected, positive-drive depth counter
- Multi-position auto-stop included. Use the No. 1008 stopper beads (included) to stop at any pre-set position
- Adjustable rod holder
- Serious pulling power. Ample spare power for extra heavy weights of pulling out snags,
- Downrigger fishing instruction booklet
- Includes Power Grip Plus line release
- Marine grade stainless steel boom
- Fully adjustable descent speed - 5 ft/min to over 300 ft/min with low amperage retrieval rates (see table below)
- 250 ft. of premium 150 lb. test stainless steel downrigger cable weeds or kelp
- The lowest amp draw of any downrigger made. Less than one third the battery draw than some of the competition
- Fully assembled and tested
- Full saltwater protection

Tilt-up Feature

All Scotty electric downriggers include the 1023 Tilt-Up Mounting Bracket, which enables the unit to be tilted and locked in the upright position.

See page 10 for optional downrigger mounts

Weight	7 lb.	10 lb.	15 lb.	20 lb.
Retrieval Speed	235 ft./min.	222 ft./min.	203 ft./min.	185 ft./min.
Amperage Draw	4 amps	5 amps	8 amps	11 amps

1099 Compact Depthpower 24"

All the performance features of the larger models in a compact size.

- 24" long, 1" diameter stainless steel boom.
- 250 ft. of premium 150 lb. test stainless steel downrigger cable
- Boom mounted Rodmaster II rod holder
- 1 Power Grip Plus line release

1101 Depthpower 30"

Designed for heavy duty use, this unit will handle long hours and heavy weights in tough conditions.

- 30" long, 1 1/4" diameter stainless steel boom
- 250 ft. of premium 150 lb. test stainless steel downrigger cable
- Boom mounted No. 350 Rodmaster II rod holder
- 16 Position swivel pedestal mount
- 1 Power Grip Plus line release

1106 Depthpower 36"- 60"

The most popular Scotty Electric, with a boom that telescopes for extra reach and collapses for extra storage. Makes a great "big boat" rigger.

- 36" - 60" long, 1 1/4" dia. telescoping stainless steel boom (collapses to 36" for storage)
- 250 ft. of premium 150 lb. test stainless steel downrigger cable
- 16 Position swivel pedestal mount
- Boom mounted Rodmaster II rod holder
- 1 Power Grip Plus line release

1116 Propack 36"- 60"

The top choice of charter captains. This unit gives the versatility of a telescoping boom with the dual rod holder option & pedestal swivel base.

- 36" - 60" long, 1 1/4" dia. telescoping stainless steel boom (collapses to 36" for storage)
- 250 ft. of premium 150 lb. test stainless steel downrigger cable
- 247 Dual rod holder
- 16 Position swivel pedestal mount
- 2 Power Grip Plus line releases
- Weight storage hook

1117 Big Water Propack Tournament Series 36"- 60"

This big water unit has the ultimate combination of features: telescoping boom, fully adjustable dual Rodmaster II rod holders, height extenders and pedestal swivel base.

- 36" - 60" long, 1 1/4" dia. telescoping stainless steel boom (collapses to 36" for storage)
- 250 ft. of premium 150 lb. test stainless steel downrigger cable
- 350 Rodmaster II rod holders
- 259 Height Extenders
- 16 Position swivel pedestal mount
- 2 Power Grip Plus line releases
- Weight storage hook



Manual Downrigger



Model 1090 Longarm Downrigger

Scotty Manual Downriggers have been the preferred choice of fishermen for over thirty-five years. They are engineered with a number of “exclusive” features contained in no other downrigger

Tilt-up Feature
All Scotty Strongarm & Longarm downriggers include the 1023 tilt-up mounting bracket which enables the unit to be tilted and locked in the upright position



Each Scotty Downrigger comes with the Scotty limited Lifetime Warranty. The best warranty in the industry is backed by 60 years of manufacturing know-how and unbeatable customer service.



Standard Features

- High speed two feet per turn spool coupled with the an extended handle for extra leverage, which makes cranking a breeze
- Spray-protected, *positive-drive* depth counter
- Fully adjustable Rodmaster II boom mounted rod holder
- Marine grade stainless steel boom
- Downrigger fishing instruction booklet
- Includes Power Grip Plus line release
- 1023 tilt-up mounting plate
- An automatic brake with the most disk brake surface on the market. In the event of a bottom hang-up, it will pay-out to avoid losing gear
- Fully adjustable descent speed
- Fully assembled and tested
- Full saltwater protection.



1080 Strongarm 24
This downrigger has outstanding features for small and intermediate size boats.

- 24” long, 1” diameter stainless steel boom
- 200ft. of premium 150 lb. stainless steel downrigger cable
- Boom mounted Rodmaster II rod holder
- Power Grip Plus line release



1085 Strongarm 30
The heavy duty workhorse of the Scotty manual lineup. Excellent for the intermediate size boat.

- 30” long, 1 1/4” diameter stainless steel boom
- 200ft. of premium 150 lb. stainless steel downrigger cable
- Boom mounted Rodmaster II rod holder
- Power Grip Plus line release



1090 Longarm 36”- 60” Telescoping Boom
Makes an ideal “big boat” rigger with all the deluxe features.

- 36” - 60” long, 1 1/4” dia. telescoping stainless steel boom (collapses to 36” for storage)
- 200ft. of premium 150 lb. stainless steel downrigger cable
- Boom mounted Rodmaster II rod holder
- Power Grip Plus line release

1091 Longarm 36” - 60” Combo Pack
Ideal for big boats. All the same features as the 1090 plus the pedestal swivel base.

- 36” - 60” long, 1 1/4” dia. telescoping stainless steel boom (collapses to 36” for storage)
- 200ft. of premium 150 lb. stainless steel downrigger cable
- Boom mounted Rodmaster II rod holder
- 16 Position swivel pedestal mount
- Power Grip Plus line release



Manual Downrigger



Each Scotty Downrigger comes with the Scotty limited Lifetime Warranty. The best warranty in the industry is backed by 60 years of manufacturing know-how and unbeatable customer service.



1050 Depthmaster 23"

Compact, versatile and reliable, the perfect introductory downrigger. One foot per turn spool operates easily with either hand from a sitting position in the boat.

- 200' of premium 150 lb stainless steel downrigger cable.
- Boom mounted Rodmaster II rod holder



1050 MP - Masterpack 23"

The 1050 Depthmaster rigged with a portable, 1021 clamp mount.

- 200' of premium 150 lb stainless steel downrigger cable.
- Boom mounted Rodmaster II rod holder



1060 Depthking 23"

Includes a high speed two feet per turn spool. The spool also comes equipped with an extension handle for extra leverage with heavy weights. Ideal for the small boat that fishes deep and needs a high speed retrieve.

- 200' of premium 150 lb stainless steel downrigger cable.
- Boom mounted Rodmaster II rod holder

Model 1050 Depthmaster

The Depthmaster and Depthking models offer more value for the fisherman than anything else on the market. The price and operating features of these units beat the competition hands down!

Standard Features

- Spray protected, positive drive depth counter
- Adjustable boom-mounted Rod Master II rod holder
- 23" long, 3/4" diameter stainless steel boom
- Includes Power Grip Plus line release
- 200' of premium 150 lb stainless steel downrigger cable
- Quick-slide 1010 deck mounting bracket
- Automatic brake with the most disc brake surface on the market. In the event of a bottom hang-up, it will pay-out to avoid losing gear.

Compact Downrigger Mounts



1010

Included with Depthking & Depthmaster, and is designed to work with the 1025 through 1029 optional mounts.

Dimensions : 4 3/4" x 5 5/8"
Bolting dimensions: 2 5/8" x 4 7/8"



1015

For boats with narrow or uneven gunnels. Fits 1050 downriggers. To be used in conjunction with 1010 mounting bracket. (1010 mounting bracket not included)

Dimensions: 5 1/4" x 2 1/2"
Bolting Dimensions: 4 9/16" x 1 5/8"



1021

Portable mounting option that is great for aluminum boats. Double stainless steel bolts and black anodized aluminum. 2" clamp opening. To be used in conjunction with 1010 mounting bracket.

Dimensions: 5 5/8" x 4 3/4" x 3 1/8"



Laketroller downriggers built for the smaller boat. Great for aluminum boats, kayaks and canoes



Recommended for use with weights under 4 lb.

1071 Clamp Mount

Comes with fully portable engineering grade modified nylon clamp for mounting on the gunnel or transom (2" opening). Great for aluminum boats and canoes. One foot per turn spool.

Standard Features

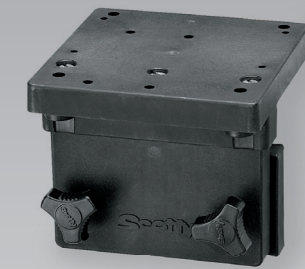
- Easy adjust drag brake
- Stainless steel and nylon construction.
- 100 ft. of premium 150 lb stainless steel downrigger cable
- Rugged, re-enforced nylon clamp mount
- Scotty Mini Power Grip Plus line release included (1181)



Recommended for use with weights under 4 lb.

1073 Bracket Mount

Mounting bracket permits mounting on a flat deck surface or on the side of a gunnel or transom. The mounting design gives 360° rotation. Comes with a 241 Side / Deck Mount. One foot per turn spool.



1025 Right Angle Side Gunnel Mount

For boats with narrow or uneven gunnels. Strong and durable, with quick fastening stainless steel mounting knobs for easy set-up and removal.

Fits all Scotty downriggers (except Laketrollers) and can be used with 1026 Swivel Mount
Dimensions : 6" x 6" x 6" (top plate)
Bolting dimensions: 2"x 4" (side plate)



1026 Swivel Mount

Gives full 360° rotation with 16 locking positions, quick fastening stainless steel mounting knobs for easy set-up and removal.

Fits all Scotty downriggers (except Laketrollers)
Dimensions : 5 1/2" x 5 1/2" x 4"
Bolting dimensions: 3 1/2" x 4 1/2"

1035 Extra Mounting Knobs only

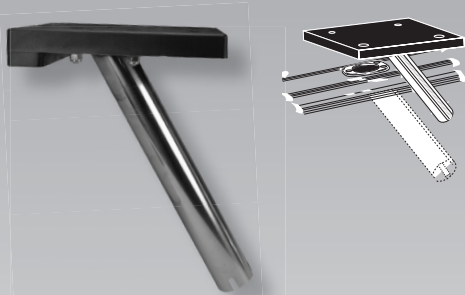
(package of 2). Knobs also fit Scotty rodholders



1027 Rail Mount

Fits up to 1 1/2" round rails, including oval-shaped wooden rails. Easily installed and removed for storage (wooden board not included). Transfers the downward pressure to the boat gunnel.

Fits all Scotty downriggers (except Laketrollers) and can be used with 1026 Swivel Mount
Dimensions: 6 1/8" x 7 1/8"



**1028 Gimbal Mount - 9"
1029 Gimbal Mount - 12"**

Fits into a boat's flush mount rod holder. Eliminates drilling holes and permanent mounting of downrigger brackets on boat. Made from welded stainless steel and modified nylon for the ultimate in strength and durability. For use with heavy duty factory mounted gimbal rod holders only.

Fits all Scotty downriggers and can be used with 1026 Swivel Mount
Dimensions:
1028 6 1/8" x 7 1/8" x 9" x 1 1/2" dia.
1029 6 1/8" x 7 1/8" x 12" x 1 3/4" dia.



1023 Tilt-up Mounting Bracket

Extra mounting bracket for all Scotty tit-up downriggers
Dimensions: 2 1/2" x 4 1/2"
Bolting Dimensions: 3 3/4" x 1 5/8"



2606

6" Downrigger Pedestal Riser

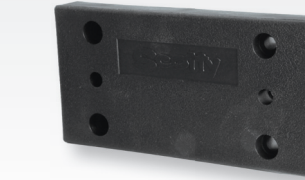
2612

12" Downrigger Pedestal Riser

Pedestal Risers

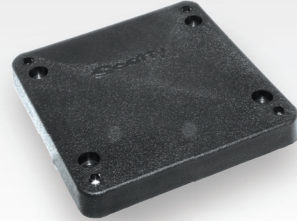
Made from fibre reinforced nylon and stainless steel 2" tubing for the ultimate in strength and durability. Designed to be used with 1010 compact downrigger mount, 1023 tilt-up downrigger mount and 1026 swivel mount.

Plate Dimensions: 5 1/2" x 5 1/2"
Bolting Dimensions: 3 1/2" x 4 1/2"



1037 Mounting Plate

Extra mounting plate for 1025 Right Angle Side Mount



1036 Mounting Plate

Extra mounting plate for 1026 Swivel Mount

Dimensions: 5 1/2" x 5 1/2"
Bolting dimensions: 4 1/2" x 3 1/2"

Scotty 12V Plug and Receptacle from Marinco®



**2126 12V Downrigger Receptacle
2127 12V Downrigger Plug
2125 12V Downrigger Plug and Receptacle
2128 Optional Right Angle Receptacle Mount for ConnectPro® Downrigger Receptacle**

- Patented Marinco® ConnectPro® Plug and Receptacle have weather resistant connections
- Unique locking blades and spring clamping connection for secure electrical contact
- Large contact surface area for maximum conductivity
- Corrosion-resistant, plated brass electrical components
- Marinco®'s exclusive Perma-Lock™ terminals, which virtually never need retightening

1133 12ft. Premium 12 Gauge 2 Conductor Downrigger Power Wire

- For wire run lengths of up to 25 feet, use minimum 12 Ga. wire. For runs of 25 – 40 feet use, 10 Ga. wire.
- Manufactured from HEAVY DUTY annealed, tinned copper, providing maximum current flow.
- Ultra-flexible for extra protection from vibration or frequent flexing.
- CSA and UL approved, RoHS compliant.
- Recommend for use with Scotty 1124 - 30 amp inline fuse.
- 12 ft in length



"Scotty Downrigger" power wire is specially designed to exceed recommendations for cold bend flexibility, moisture, salt and oil resistance, heat shock, flammability and resistance to moisture capillary action.

1124 Marine In-line Fuse Holder

complete with 30 amp fuse



Downrigger Theft Deterrent System*

3131 Swivel Mount Lock

Works with the 1026 Swivel Mount. Replace one of your mounting knobs with the locking knobs to secure your mount.



3130 Chassis Lock

Locks main base bolt to the 1023 tilt mount on 1080-2116 models.



Protect your lock's internal components with a lubricant

3132 Right Angle Mount Lock

Works with the 1025 Right Angle Side Gunnel Mount. Replace one of your mounting knobs with the locking knobs to secure your mount.



3133 Locking Kit

Combination of the 3130 Chassis Lock and 3131 Swivel Mount Lock for complete protection at a package price.

***This system provides a degree of protection for your Scotty Downrigger and Swivel Mount. It is not designed to, and will not stop the determined and equipped thief.**



Striker Rod Holders



240 Striker rod holder with 241 side/deck mount



246 Striker rod holder with 244 flush deck mount.

239 Striker rod holder no mount (not shown)

- Designed for Muskie, Halibut, Sturgeon, and other big game fish. Stainless steel reinforced post, larger opening with easy lock / unlock ring.
- The inner support rotates with the rod to instantly remove and “strike” simultaneously.
- Complete with 241 Combination Side/Deck Mount which allows mounting on a flat deck surface or on the side of a gunnel or transom.

ORCA Rod Holders



The inner sleeve opens in one complete motion allowing the fastest rod release of any rod holder on the market.

400 - Orca Rod Holder with 241L **LOCKING** push button combination side/deck mount

401 - Orca Rod Holder with 244L **LOCKING** lever flush mount

- The fastest rod release of any holder on the market.
- With one quick motion, your fishing rod is lifted straight out into the fish fighting position.
- Completely adjustable to multiple vertical and horizontal positions.
- Fibre reinforced engineering nylon, offers strength, resilience and reliability.



Power Lock Rod Holders



230 Power Lock rod holder with 241 side/deck mount

231 Power lock rod holder with 244 flush deck mount.

229 Power lock rod holder no mount (not shown)

All post mount Scotty Rod holders are fully adjustable up and down and rotate 360°.



- Scotty's most popular value-priced, positive-locking, open style rod holder. Fibre reinforced engineering nylon offers strength, resilience and reliability.
- Bolting dimensions: 1 5/16" x 3 3/16"

Available in four colors: Choose black , sand, grey or white

Triple Rod Holders



256 Includes three 230 Power Lock rod holders
Includes Power Lock rod holders and 362 Triple Mounting System with 241 Combination Side/Deck Mount.

- Scotty's fully-adjustable multiple rod holder comes with a built-in lure and accessory rack, which gives you quick access to your lures and tools.
- Includes 241 combination deck or side mount. Made from fibre reinforced engineering nylon.

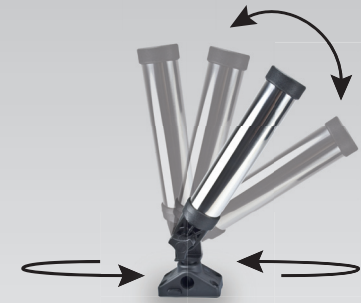


257 Triple Rod Holder Mount
Customize the 257 Triple Rod Holder with the rod holder of your choice. This configuration includes the same 360 degree side or deck mounting bracket but does not include rod holders.



362 Triple Rod Holder Permanent Mount Board Only
Triple Rod Holder Board Only - This unit fastens directly to the deck of your boat and you choose which rod holders to add. Rod Holders, mounting post and bracket not included.

Rocket Launcher Rod Holders



Fully Adjustable with over 9" of stainless steel jacketed composite construction, accomodates all rods



470
with 241L side/deck mount (with stainless steel jacket)

476
with 241 side/deck mount (without stainless steel jacket)

471
244L locking flush mount (with stainless steel jacket)

477
244 locking flush mount (without stainless steel jacket)

- Tilts up and down, including upright for rod storage when travelling
- Less missed strike opportunities
- Swivels 360 degrees
- To use the new Scotty "lock-down" mount system, simply choose the best direction to fish from and insert the rod holder or accessory, pushing the post straight down into the mount. Can be mounted on top or side of gunnel.

- Rocket Launcher Inside Diameter: 1.70"
- Bolting Dimensions: 1 5/16" x 3 3/16"



350
Rodmaster II rod holder with 241 side / deck mount

351
Rodmaster II rod holder with 244 flush deck mount.

349
Rodmaster II rod holder no mount (not shown)

250 Rodmaster rod holder with 241 Deck or side mount.

251 Rodmaster rod holder with 244 Flush deck mount.

Rodmaster II Rod Holders

- Fibre reinforced engineering nylon offers strength, resilience and reliability.
- Front end reel slot and removable gimbal pin accomodates any rod and reel combination
- 10" tube.
- Bolting dimensions: 1 5/16" x 3 3/16"

Downrigger Boom Rod Holder
358 Rodmaster II boom rod holder fits 1 1/4" scotty downrigger booms - clamp on style.

355 Rodmaster II boom rod holder fits 3/4" and 1" scotty downrigger booms. Bolts through the boom.



Rodmaster Rod Holders

8" tube style rod holder, fully adjustable.

Downrigger Boom Rod Holder
258 Rodmaster boom rod holder fits 1 1/4" scotty downrigger booms - clamp on style.

255 Rodmaster boom rod holder fits 3/4" and 1" scotty downrigger booms. Bolts through the boom.



Bait Caster / Spinning Rod Holders



280 Bait caster / spinning rod holder with 241 Side/ deck mount



281 Bait caster / spinning rod holder with 244 Flush deck mount.

279 Bait caster / spinning rod holder no mount (not shown)

- Holds a bait caster reel in a cushioned cradle. A slot in the front of the rod holder allows for a spinning reel to be securely held in position.
- The rod holder design has a side mounted flange, which leaves the bottom open. This allows for the rod holder to accommodate trigger grips.

- Pistol grip rod butts easily clear the sides of the rod holder for quick rod retrieval. Rod can be secured in holder with a soft latching strap which snaps over the top.

Available in:
Black, grey or white

388 Gear-Head Mount Kit
Great for kayaks!
Bring your rod closer to you and snap it in place with the Scotty "Gear-Head" mount. Simple and quick to reposition.



Fly Rod Holders



265 Fly rod holder with 241 Combination deck or side mounting bracket.



264 Fly rod holder with 244 Flush deck mount.

260 Fly rod holder no mount (not shown)

- Innovative compact design allows hands free trolling with a fly rod.
- Fully adjustable and includes a safety strap.
- Even works well with "short butt" fly rods

267 Fly Rod Holder and Float Tube Mount Combination

The Fly Rod Holder combined with adjustable wrap-around straps and quick-release clips to use with your float tube or pontoon boat.

266 Float Tube Adapter

Mounting braces adjustable wrap-around straps and quick-release clips to use with your float tube or pontoon boat. For use with 241 side/deck mount. (241 not included)



222 Sidewinder

Fast, instant rod removal. 5/16" stainless steel for strength and durability. Soft grips protect rod. Triggerlock mount included.

223 Sidewinder (Bulk)

Rod Holder only (no mount included).

405 Offshore Orca Kit

1- Orca Rod Holder body
1- 459 adjustable rod holder extension
1- 5/16" x 2 1/4" S.S. Star knob
The 405 is an optional boom mount for all Scotty downriggers
When adjusted properly, the 405 allows for closer inboard positioning of the Orca rod holder, creating faster and easier rod removal.

271 Mounting Post

Mounting post for the 256 Triple rod holder

412 Replacement Rod Holder Post

This replacement post fits all Scotty post mount rod holders and bases.

238 Rail Mount Adapter

For 222 and 223 rod holders. Works with a 237 Triggerlock mount to clamp to 7/8" and 1" round rails.

237 Triggerlock Mount

For 222 rod holders and 1015 Right Angle Mount.
Dimensions : 1 5/8" x 4 5/8"

247 Dual Rod Holder

10" tube style rod holder. Gives you the ability to fish with 2 rods without mounting another rod holder. Designed for use with the 1026 Swivel Mount (mounting hardware included) .
(See page 5 on our Propack Models)

347 Extended Dual Rod Holder

Comes with 2 - 346 Extended Rodmaster II rod holders and gives you the ability to fish with 2 rods without mounting another rod holder. Designed for use with the 1026 Swivel Mount (mounting hardware included) To see an example go to page 5 in our electric downrigger Propack Model section.

241 Combination Side or Deck Mount

Can be mounted on top or side of gunnel. For all Scotty post mount rod holders. Dimensions: 4" x 2" x 2" Bolting dimensions: 1 5/16" x 3 3/16"

241L Locking Combination Side or Deck Mount

LOCKING push button
Can be mounted on top or side of gunnel. For all Scotty post mount rod holders. Dimensions: 4" x 2" x 2" Bolting dimension: 1 5/16" x 3 3/16"

244 Flush Deck Mount

Sealed base for watertight applications plus includes a splash cover. For all Scotty post mount rod holders. Dimensions: 4" x 2" x 2" Bolting Dimensions : 1 5/16" x 3 3/16"

244L Locking Flush Deck Mount

LOCKING lever
With splash cover
For all Scotty post mount rod holders. Dimensions : 4" x 2" x 2" Bolting Dimensions : 1 5/16" x 3 3/16"

344 Round Flush Deck Mount

Sealed base for watertight applications (such as kayak decks) includes splash cover. For all Scotty post mount rod holders. Dimensions: 3 3/4" diameter Bolting Dimensions : 2 3/16" x 2 3/16"

444 Compact Threaded Deck Mount

Fits gunnels up to 2" thick. Secures with no exposed hardware using provided nylon nut. Comes with cap to seal the bottom.

248 Oarlock Mount

Excellent for row boats. Use the oarlock socket on your small boat to mount a rod holder or laketroller downrigger. Install or remove in seconds.

449 Clamp Mount

Fully portable mounting option for all Scotty post mount rod holders. Works with a 241 combination side / deck mount (not included). Made from super tough reinforced nylon.

341 Glue-on Mount

Manufactured from flexible PVC and can be bonded to PVC or Hypalon inflatable boats. Stainless Steel fasteners included. Size: 5"w x 7"h
Works in conjunction with 241 side/deck mount (not included)
Comes in Gray and Black

253 Gimbal Mount

Allows the use of all Scotty post mountrod holders with factory installed flush mounted rod holders. Fits 9"x1 1/2" flush mounts.

340 Track Adapter

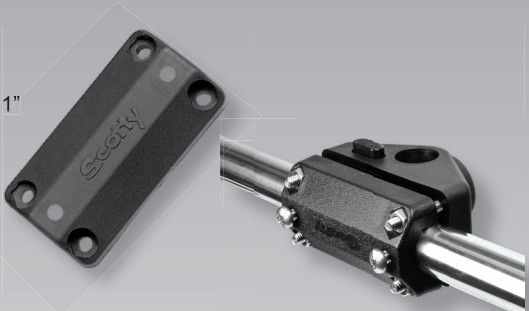
Let's you use all Scotty rod holders with 3 1/2" wide track systems. Made from super tough reinforced nylon. Fits : Bert's, Trax Tech, and others
Stainless Steel fasteners included.
Works in conjunction with 241 side/deck mount (not included)



No. 241, 242 and 244 are available in black, sand, grey or white

242 Rail Mount Adapter

Fits 7/8" & 1" diameter round rail, and 1" square rail.
For all Scotty post mount rod holders.
Works with 241 side / deck mount
Includes stainless steel fasteners.



243 1 1/4" Square Rail Mount

Provides versatile mounting without having to drill more holes in your boat. Perfect for boats with limited mounting surfaces. Stainless steel fasteners (included) hold this tough mount securely in place
Works with all Scotty post mount rod holders.
Fits 1 1/4" square rails.



245 1 1/4" Round Rail Mount

Excellent for pontoon boats. Position your Scotty rod holder anywhere on your rail. Provides versatile mounting without having to drill more holes in your boat. Stainless steel fasteners (included) hold this tough mount securely in place. Works with all Scotty post mount rod holders. Fits 1 1/4" round or square rails.



287 7/8" Round Rail mount

Same great features as the 245 (shown above) but designed for use on 7/8 round rails.



429 Gear-Head Mount Extender

Bring your rod closer to you and snap it into place with the Scotty Gear-Head mount extender. Customize the 429 with the Scotty rod holder and mount of your choice.



254

259

459



459M

254M

427

428



254 Rod Holder Height Extender

Increase your odds with easier access to your rod and reel. Extends the height of a rod holder by 8 1/2". Stainless steel shaft. Works with all Scotty post mount rod holders.

259 Rod Holder Height Extender

Increase your odds with easier access to your rod and reel. Extends the height of the rod holder by 6 1/2", allowing for faster access when that fish strikes. Made from super tough reinforced nylon. Works with Scotty post mount rod holders (except 240 Striker).

254M MINI Rod Holder Height Extender

The "Mini Extender" allows you to lift your Scotty Rod Holder off the deck, allowing full movement and versatility. The "Mini Extender" works perfectly to eliminate the possibility of your rod interfering with an inconvenient rail position or other obstruction. For use with all Scotty post mount rod holders. Extends the height of a rod holder by 4 1/4".

459 Adjustable Rod Holder Extender

Provides the option for you to position your Scotty Rod Holder into that perfect fish fighting location. Conveniently position your rod holder closer to you on your kayak or your downrigger to eliminate reaching for your rod. Extends the height of a rod holder by 6 1/2".

459M Mini Double Ended Rod Holder Height Extender

This is the perfect adaptor to lift your Scotty Rod Holder off of your deck or to find that absolutely perfect fishing position. The mini extender adds an extra 5 1/2" of length to your rod holder post and will greatly improve a difficult or dangerous fishing position. Manufactured from practically indestructible materials, the Scotty Mini Extender will make fishing from your watercraft even easier.

427 Multi Angle Adapter

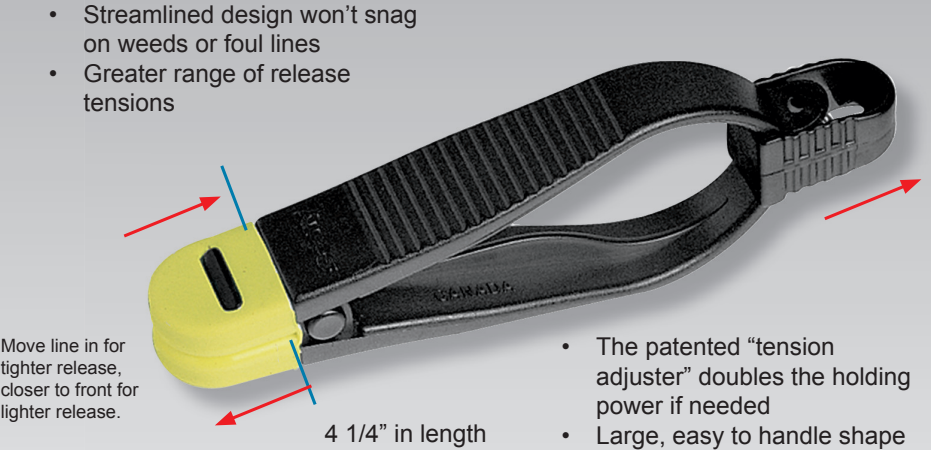
Position your rod to face fishing action. Combine the 427 Double Gear Adapter with the 459 Double Ended Extender

428 Gear-Head Mount

Quick and Easy, Drop and Lock System. Allows you to secure and re-position your rod holder with just a twist. Use in conjunction with an extender to bring your rod closer to you. Can also be used to mount the 240 Striker rod holder onto your downrigger boom

Power Grip Plus

- Streamlined design won't snag on weeds or foul lines
- Greater range of release tensions

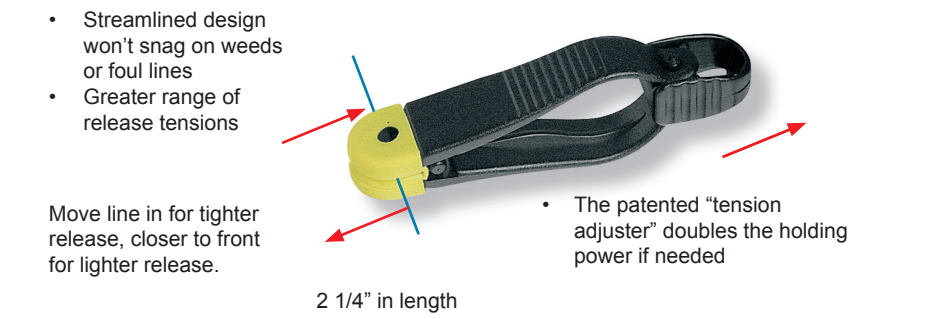


The line release is the critical link between the downrigger and the fishing rod. If it does not perform properly you will lose both valuable fishing time and fish. The fishing line is gripped between the soft pads with variable release tension is attained by moving the line in or out of the jaws. The line release is attached to either the weight or the cable. The patented "tension adjuster" doubles the holding power if needed.

Mini Power Grip Plus

A compact version of the Power Grip Plus.

- Streamlined design won't snag on weeds or foul lines
- Greater range of release tensions



1170 18" heavy monofilament leader with cannonball snap. Included with all downriggers

1171 18" leader with stacking, self-locating snap

1172 30" leader with stacking, self-locating snap

1173 48" leader with stacking, self-locating snap

1178 60" leader with stacking, self-locating snap

1176 "Stacker" - 6" Leader

1179 "Stacker" with 30" leader

1191 "Stacker" with 40" leader

1192 "Stacker" with 60" leader

1177 Planer Board Snap

1190 6 Replacement Power Grip Pads

1181 18" wire leader with cannonball snap

1182 Planer Board - 4 pack

1180 18" wire leader with stacking, self-locating snap

1183 30" wire leader with stacking, self-locating snap



The Original “Snapper” Line Release

The fishing line is gripped between the soft pads with variable release tension attained by moving the line in or out of the jaws.

- 1041** 18” Leader with stacking, self-locating snap
- 1049** 30” Leader with stacking, self-locating snap
- 1040** 48” Leader with stacking, self-locating snap

- 1042** 18” Leader with cannonball snap

- 1160** Snapper “Stacker” - 6” leader

- 1045** 7” wire cable leader

- 1043** Planer Board Release

- 1046** “Mini” Snapper 18” leader with stacking, self-locating snap

- 1047** 18” leader with cannonball snap

- 1048** Planer Board - 4 pack.

1155 Trolling Snaps

2 nickel/ silver trolling snaps - large, approx. 5” overall length

- 1156** 2 stainless steel trolling snaps - small, approx. 3” overall length.

1005 Downrigger Release

The original plug type release

1006 Extra Pins

For 1005 line release (3 per pack)



Great for use with braided fishing line!

Hairtrigger Releases

A fully adjustable tension release clip. With a simple turn of the yellow nut you can increase or decrease the amount of desired release tension. One of the only release clips on the market that works exceptionally well with braided fishing line.

- 1020** The pin is attached to the clip body to prevent loss.

1030 Extended Hairtrigger

18” heavy monofilament leader
The heavy monofilament line between the wire clip and the release end allows detection of small fish on the rod tip and permits easier hookups.

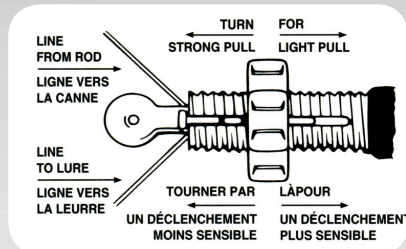
1032 18” Extended Hairtrigger

18” leader with stacking, self-locating snap

1031 48” Extended Hairtrigger

48” leader with stacking, self-locating snap

- 1022** 3 extra pins for all hairtrigger release clips.



HIGH PERFORMANCE 180lb test Premium Stainless Steel Downrigger Cable

- 2401K** 300 ft. of 180 lb. test
- 2402K** 400 ft. of 180lb. test
- 2403K** 500 ft. of 180lb. test

Includes:

1 Coastlock snap with swivel, 3 sleeves, 1 soft stop bumper and 1 stainless steel thimble.



Premium 150lb test Stainless Steel Downrigger Cable

- 999** 150 ft., of 150 lb. test
- 1000** 200 ft. of 150 lb. test
- 1001** 300 ft. of 150 lb. test
- 1002** 400 ft. of 150 lb. test
- 1003** 500 ft. of 150 lb. test

Add a “K” to these product numbers to include an 1153 Terminal Kit

1157 Stainless Steel Thimble Kit

2 stainless steel thimbles and brass connector sleeves.

1004 Connector Sleeves

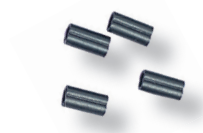
10 black brass sleeves for joining wire line or for locating line releases.

1011 Double Line Connector Sleeves

10 double black brass sleeves for joining wire or heavy monofilament line.

1007 Release Clip Locators

10 split brass crimps for locating line releases.



175lb Test - Low Drag Premium Braided Downrigger Line

Braided line offers the ultimate in strength, consistency and durability. Made with Premium Spectra Braided Downrigger line. Use of braided downrigger line helps combat electrolysis around your fishing gear.

- 2299** 150 ft. of 175 lb. test
- 2300** 200 ft. of 175 lb. test
- 2301** 300 ft. of 175 lb. test
- 2302** 400 ft. of 175 lb. test
- 2303** 500 ft. of 175 lb. test

Add a “K” to these product numbers to include Coastlock Snap and a Soft Stop Bumper.



1008 Stopper Beads for Stainless Steel Lines

6 nylon stoppers for the auto stop and for locating line releases.(3 each black and yellow).

1008-24 Stopper Beads for Stainless Steel Lines

24 pack of moulded nylon stopper beads for the auto stop and locating line releases. Available in all black or all yellow.

2008 Auto-Stop Beads For Braided Line

6 beads for use with braided line for all Scotty electric downriggers

2008-24 Auto-Stop Beads For Braided Line

24 beads for use with braided line for all Scotty electric downriggers.

1039 Soft Stop Bumper

4 pack. For downrigger snap hooks.



250lb Test - High Strength Premium Braided Downrigger Line

Braided line offers the ultimate in strength, consistency and durability. Made with Low Stretch Dyneema® Fiber. Use of braided downrigger line helps combat electrolysis around your fishing gear.

- 2199** 150 ft., of 250 lb. test
- 2200** 200 ft. of 250 lb. test
- 2201** 300 ft. of 250 lb. test
- 2202** 400 ft. of 250 lb. test
- 2203** 500 ft. of 250 lb. test

Add a “K” to these product numbers to include Coastlock Snap and a Soft Stop Bumper.



1038 Cable Coupler

Attaches the snap hook to the downrigger cable quickly and easily without the use of metal crimps. Built in rudder eliminates weight spin for longer cable life. Remove rudder when used with finned weights.

1009 2 Insulating downrigger weight swivel hooks with connector sleeves.

1154 Terminal Kit

1 Swivel hook (No.1009), connector sleeves, 1 stainless steel thimble and 1 soft stop bumper.

1151 1 Coastlock Snap with Sampo Swivel

(200 lb. test)Stainless steel with premium Sampo ball bearing swivel. Connector sleeves included.

1150 2 Coastlock Snaps

(225 lb. test). Stainless steel with barrel swivel. Connector sleeves included.

1152 2 Large Coastlock Snaps

(350 lb. test)Stainless steel with barrel swivel.

1153 Terminal Kit

1 Coastlock snap with swivel (No.1150), connector sleeves, 1 soft stop bumper and 1 stainless steel thimble.



Trolling Snubber

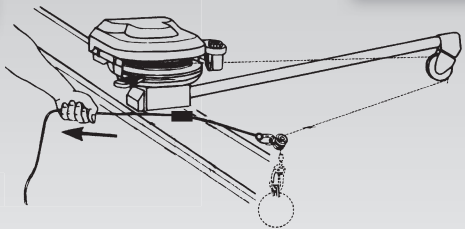
Place between your downrigger cable and weight. The Scotty Trolling Snubber absorbs shock, provides electrical insulation and helps prevent snags. Easy to grip. Allows quick connection to your downrigger cannon ball.

370 Trolling Snubber with Sampo® ball bearing swivel and trolling snap (weight not included)

371 Trolling Snubber with trolling snap only

3025 Downrigger Weight Retriever

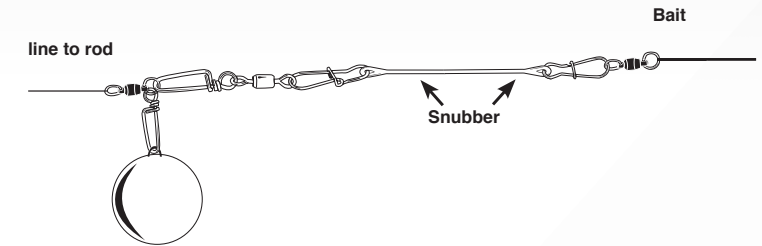
Great helper and safety precaution for the downrigger fisherman. Brings weights in for rigging lines and releases without having to lean out over a gunnel. Heavy-duty long-wearing nylon fairlead.



****A MUST FOR ALL DOWNRIGGERS****

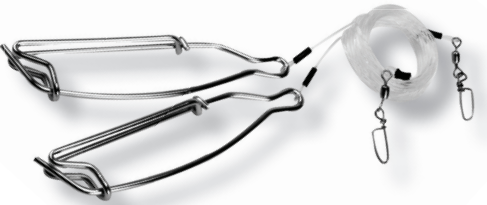
373 Diver Snubber

The diver snubber allows a certain amount of stretch that will prevent tearing the hook from the fishes mouth. High quality ball bearing swivel prevents lines from twisting.



1161 Dummy Flasher Rig

Quickly attach extra flashers or dodgers to your downrigger line. 2 per pack



Scotty 12V Plug and Receptacle from Marinco®

- 2125** 12V Downrigger Plug and Receptacle
- 2126** 12V Downrigger Receptacle
- 2127** 12V Downrigger Plug
- 2128** Optional Right Angle Receptacle Mount for 2126 Downrigger Receptacle

See page 11 for more details about this product



1124 Marine In-line Fuse Holder complete with 30 amp fuse

1125 Hella Electric Plug and Socket
For 12 volt max. 18 amp applications

1126 Hella Electric Socket only.
1127 Hella Electric Plug only.

**** Scotty Electric downriggers now come standard with Marinco ConnectPro plug and receptacle (see products 2125 - 2128)**



1140 Downrigger Fairlead for 3/4" diameter booms.

1141 Downrigger Fairlead for 1" diameter booms.

1149 Downrigger Fairlead for 1 1/4" diameter booms.



1128 Spare Belt Set
(1 large, 1 small) for 2 belt Depthpower electric downriggers (2000 models and earlier).

1129 Single Drive Belt
for Depthpower electric downriggers (2001 models and later).



1132 Replacement Emergency Crank Handle
for electric downriggers.



3015 Electric Downrigger Cover
Durable cover protects your downrigger from the elements.



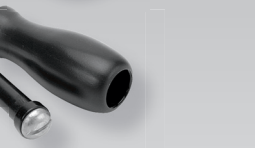
1014 Downrigger Pulley System
replacement kit. Includes pulley wheel/ housing, boom end-cap and adapters for all sizes of boom.



1139 Downrigger Pulley Upgrade Kit
for newer Scotty downriggers. Includes new pulley wheel and housing only.



1142 Downrigger Handle
for manual downriggers. Bolt and sleeve included.



1024 Counter Cover
for manual downriggers.



1145 Depthpower Counter with Base



1146 Counter with Base
for manual downriggers.



2132 HP LCD Counter
for High Performance downriggers only



1034 4 1/2" Downrigger Mounting Bolt.
Approx 4 1/2" length (2000 models and earlier).



1134 6" Downrigger Mounting Bolt.
Approx 6" length (2001 models and later)



1131 Electric Downrigger replacement lid.
For Depthpower Downriggers



2131 HP Replacement lid and LCD Counter



The Original “Black” Box”

Maximize your downriggers' fishing potential!

It has been proven that many species of fish have a strong sensitivity to electrical energy in the water. Salmon, trout and sharks are among these. Galvanic action causes electricity to flow from your boat to your downrigger cable, which creates an electrical field around your boat. The Black Box controls the voltage on the cable, maintaining the productive fishing range of positive 0.1 volt D.C. to 0.9 volt D.C. on up to six downriggers. The dial can be tuned to the desired level to suit your target fish. The Black Box can be operated in the continuous voltage mode, or the “pulsing mode” that cycles the charge on and off every 5 seconds - often triggering a strike.

1201 Black Box (digital with pulse mode)

Includes wiring harness and stainless steel contact sleeves for 2 downriggers. Water resistant housing and easy installation.

1210 Extra wire sleeve and wire harness

1211 Extra contact sleeve only

For a copy of the Black Box booklet, please call or email Scotty. See back cover for information.

Weights

1017 Cannonball 3 lb. finned lead weight.

1018 7 lb. Round Lead Weight

1019 10 lb. Round Lead Weight

3022 Weight Mate 2 Pack

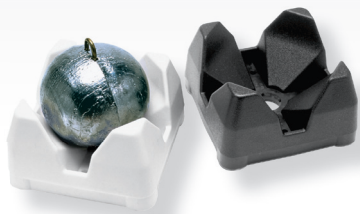
Holds your downrigger weight securely. Available in black or white

Downrigger Weight Hook

Convenient for holding your weight while you land the fish.

1147 For 1” booms

1148 For 1 1/4” booms



420 REEL E-Z Rod Handle

Offers better rod control while fighting big game fish

Easily adapts to most rods. Can mount the rod handle to the reel by replacing the reel brace underneath. Rod handle has 3 height adjustments depending on the reel. Stainless steel fasteners included.

Great for jigging!



425 Hammer Head Rod Butt Cushion

More comfortable and easier to use than most fighting belts. Universal rod butt tube allows simple rod to rod transfer



225 Gaff/Bonker

This 24 1/2” heavy duty, combination gaff/bonker also doubles as a Georgia Strait chinook measurer and fish release tool. Stainless steel construction with non-skid grip.

226 225 with 30” overall length.



273 Humminbird Piranha Sounder Mount

Uses the patented Scotty post mount design for quick removal and infinitely adjustable rotation.

Includes a 241 Combination Side / Deck Mount and stainless steel fasteners



274 Humminbird Piranha Sounder Mount Only

Fits all Scotty post mounts (sold separately)



269 Swivel Fishfinder Mount

Uses the patented Scotty post mount design for quick removal and infinitely adjustable rotation. Fits or can be adapted to most fishfinder brands including Lowrance, Eagle, Humminbird and Garmin. Includes 241 side/deck mount and stainless steel fasteners. Can be used with 242 Rail mount, 449 Clamp mount or 254 Height extender for added mounting options.

270 Includes 244 Flush Deck mount.



272 Post Bracket Only

Sold separately and works with Scotty optional rod holder mounts.



268 Fishfinder Mount

Adapt a fishfinder to your float tube or pontoon boat. Fits or can be adapted to most fishfinder brands including Lowrance, Eagle, Humminbird and Garmin. Includes transducer bracket and 6’ strap



Trap-ease

Crab and prawn trap roller for easy retrieval. Fits Scotty post rod holder mounts for convenient mounting and versatile positioning. Tough reinforced nylon and rigid design gives the Trap-ease ultimate strength.

750 Includes 241 side / deck mount

749 Mount not included

- Large size roller with pivoting head makes for smooth operation
- For use with rope up to 1/2” diameter
- Long arm for extended reach over gunnel
- Adjustable arm angle



Recommended for non-commercial, single trap use.



Vented Bait Jars

A rugged container for storing bait or for protecting bait in a crab or prawn trap. The quick unscrew lid and vented body have the right size slots to send the bait smell out, yet protect the bait from most parasites.

670 - 1/2 L. White, vented bait jar w/lid.

672 - 1/2 L. Red, vented bait jar w/lid.



Bait Jars

A rugged container for storing bait or for protecting bait in a crab or prawn trap. The quick unscrew lid has the right size slots to send the bait smell out, yet protect the bait from most parasites.

650 Jar, 1/2 litre, with lid, white.

652 Jar, 1/2 litre, with lid, fluorescent red.

654 Jar only, 1/2 litre, white.

657 Jar, 1 litre, with lid, fluorescent red.

651 Jar, 1 litre, with lid, white.

653 Lid only for bait jar, white.

656 Lid only for bait jar, fluorescent red.



Aluminum Landing Nets

Aluminum alloy handle and hoop with tough corrosion-resistant finish. Strong 1 1/4" diameter handle retracts for compact storage. Guaranteed quality – 5 year warranty.

206 30" solid hoop, 4 foot handle.

207 30" solid hoop, 6 foot handle.

215 Replacement net bag



136 Paddle Clip

Use our new paddle clip to secure your net to your boat or for gear storage in your garage.

Just clip and it's out of your way!



210 Net Minder

Simply slide the rubber ring down the net handle, clip the bottom of the net into the release and the net will release from the clip when a fish is caught in the net.



797 Anchor Kit

- 50 ft (15m) Premium Nylon Line
- 1.5 lb (0.6 kg) Folding Anchor
- Watertight Buoyant Container - doubles as a bailer
- Nylon Snap Hook, for easy attachment to vessel
- For still water use.



Anchor Lock

Anchor release system for small boats in still-water fishing situations. Easy lock and release action allows anchor line adjustments with only one hand. For use with rope up to 1/2" diameter.

Tough construction and roller bearing for smooth, quiet operation.



276 Includes a No. 241 Side / Deck Mount

277 Includes a 244 Flush Deck Mount



278 Permanent mount



ScottyCup Holder

For cans, coffee mugs and insulated sleeves. Convenient accessory rack to hang lures and tools.

Easily removable.

310 - Drink Holder with bulkhead/gunnel mount

309 - Bulk Header / Gunnel Mount - 2 pack

311 - Drink Holder with bulkhead/gunnel mount and rod holder post mount



Available in Black or White

125 Scotty Tumbler

Clear 12oz. tumbler. Virtually indestructible. Dishwasher safe.



Strongback Oar Lock

1/2" straight shank. Moulded nylon over stainless steel core. Low friction nylon creates smooth and quiet operation. Competitively priced against standard galvanized and bronze models.

102 2 1/8" Inside dimension (standard oars).

104 1 3/4" Inside dimension (small oars).



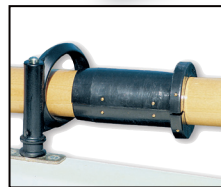
103 Oar Lock Post

Adapts all Scotty Rod holder mounts to a half inch oar lock socket



101 Oar Collar

Made of rugged, flexible polyethylene. Adjustable and long wearing. Quick and easy to install (fasteners supplied). Colors: black or white. Can be trimmed for smaller oars.



990 Knife Sharpener

The ultimate sharpening device! Safe, easy to use and can conveniently be stored in a tackle box or galley. Tungsten Carbide blades may be rotated to extend the life of the sharpener.



327 Fender Ring

Use the Fender Ring to quickly attach a fender to your Scotty rod holder mounts. Easy to insert and remove. Inside diameter of ring is 7/8". 2 per pack



3010 Snap Hook Key Chain

Available in black, blue, purple, green, red, orange, yellow, and glow.



590 Snap Hooks

Tough nylon snap hooks are great for a multitude of tasks.

6 per pack

**Also available in bulk

See back of cover for contact details



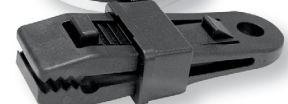
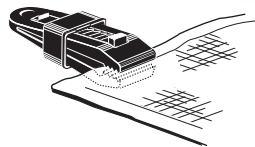
300 Tarp Clip 4 per pack.

301 60 in a Display Bulk Bucket.

Powerful locking jaws provide the ultimate grip! Quick and easy to use. Made from tough reinforced nylon. Available in black and yellow.

Unlimited uses include:

- Tarps, temporary shelters.
- Boat and automobile covers.
- Motor home awnings.
- Emergency tent repairs.
- Swimming pool covers.
- Golf towels.





135 Portable Camera / Compass mount for your GoPro™ or standard camera

The Scotty Portable Camera Mount is fully twistable, turnable, rotatable and best of all, instantly portable. Locks down a standard camera or GoPro™ without needing a special adaptor. Fits into ALL Scotty post mount systems which means we have you covered no matter what you want to mount it to. Mount on any pole from 5/8" - 1 3/8" in diameter. The versatile top plate also works great for mounting a compass or any other device that mounts on a flat surface.



302 Kayak Stabilizers

Feel secure and stable while fishing with Scotty Stabilizers attached to your kayak. Easily inflatable bladders offer over 30 lb. of extra buoyancy and Scotty's unique assembly system makes installation and removal quick and easy! The 30" long x 8" diameter pontoons are made of heavy PVC coated outer shell material.



Each Stabilizer Kit includes:
2 - inflatable pontoons
2 - 28" anodized arms w/posts
4 - 241L Locking Combination Side/Deck Mounts
2 - 280 Baitcaster Rod Holders



JIM SAMMONS - KAYAK FISHING GURU

794 Paddle Sports Accessory Kit w/ 544K Hand Pump

Comes with a kayak pump, throw bag, lifesaver whistle and a reusable mesh bag



790 Pleasure Craft Safety Equipment Kit

Contains four of the items required by The Canadian Coast Guard for vessels up to 12 meters requiring a manual bilge pump.

- 15 m buoyant heaving line with float.
- Sound signaling device (pealess whistle).
- Watertight flashlight.
- 545 21" Bilge pump.
- 793 Throw Bag



136 Paddle Clip

Sometimes simple is the best design for a product and the Scotty Paddle Clip is not only simple, it's STRONG! We spread out the mounting points, opened up the size of the mounting holes, beefed up the sidewalls and made sure it securely held every paddle we clipped into it.

Mount it in a convenient location on your watercraft and... no worries, this low profile clip will take care of holding your paddle!

Grab a couple extra Scotty Paddle Clips for tidy gear storage in your garage.



132 Extra Long Grip Mounting Rivets

These structural rivets are an excellent solution for mounting hardware where you don't have access to the back side of a fastener. Great for mounting to thin-walled watercraft such as kayaks, these rivets are designed to "butterfly" open to spread the mounting load over a greater area. 10 pieces per package.



Hand Pumps

- Stainless steel piston rod for strength and durability.
- Lifetime warranty.
- Large handle for easier operation.
- Easily disassembled for cleaning.
- 1 1/2" barrel diameter means quick pump outs.
- Includes 24" of 1 1/8" black bilge flex hose.

544 13 1/2" Bilge Pump

13 strokes per gallon.

545 21" Bilge Pump

7 1/2 strokes per gallon.

548 34" Bilge Pump

3 1/2 strokes per gallon.



Original Purchaser
Limited Lifetime Warranty

Kayak Pump

Stainless steel piston rod for strength and durability. Comes with pump float. Lifetime warranty.

544K 13 1/2" Kayak Pump with float.

545K 21" Kayak Pump with float.

546 Float only for Kayak Pumps.



Original Purchaser
Limited Lifetime Warranty

130 Paddle Leash

The Scotty Paddle Leash now has a **new, improved system** for attaching our leash to your paddle, fishing rod or anything else you wish to secure. Simply wrap the strap around your paddle, thread it through itself, snap the Scotty hook onto it and...voila, you're done! Our 6 foot self retracting leash will quickly and safely secure anything up to 1 1/2" in diameter. Also comes with a figure 8.



828 Folding Sea Light

- U.S. Coast Guard approved waterproof/ corrosion resistant bright light, visible up to 2 miles, operates for up to 8 hours with 2 alkaline batteries.
- Light weight pole, 42 inch overall length, c/w unique drop-down adjustment feature.
- The mounting base included is the new model 241L combination top/side mount, c/w push button for easy installation/removal.
- 42" tall light also includes a highly visible orange flag edged with 3M reflective tape. The flag is attached to the pole using non corrosive nylon gromets and tie wraps.



SEA-LIGHT for Paddling Safety

USCG approved light - visible up to two miles. Waterproof and corrosion resistant. Runs up to 8 hrs. on 2 "AA" batteries. Removable light is portable and can easily be attached to a life jacket.

- 823** Includes 20" pole and 241 combination side/deck mount.
- 824** Includes 20" pole and 244 Flush Deck mount.
- 825** Includes suction cup mount and safety leash. (No pole)
- 826** Includes 20" pole and 344 Round Flush Deck mount.
- 827** Includes 20" pole and 444 Compact Flush Deck mount.



793 Throw Bag

50' x 9/32" 550lb test
15m x 7mm 250 kg test
Braided MFP polypropylene floating rope
Bright orange nylon and polyester self-draining bag c/w adjustable strap & 3M reflective safety band



795 Water tight flashlight

Uses 2 "AA" batteries (not included)
Ultra bright Xenon bulb



780 Lifesaver #1 Safety Whistle

The world's most advanced all-purpose safety whistle. Designed by search and rescue professionals. The synthetic peas will not absorb moisture or freeze. Works when soaking wet – clears instantly.

- ABS plastic will not stick to mouth in cold weather as metal whistles do.
- Double chambered for multiple pitches.
- Waffled sure-grip.
- Meets anti-choking standards for children.
- Large tooth-grip for hands free use.
- Lip-seal prevents loss of air in extreme cold.



784 Pealess Whistle

Same as above but pealess for Coast Guard requirements.

779 Small Vessel Safety Equipment Kit

Contains four of the items required by. The Canadian Coast Guard for vessels up to 8 meters.

- 15 metre buoyant heaving line.
- Clear Bailer (watertight container).
- Sound signaling device (pealess whistle).
- Watertight flashlight (batteries not included)



IT'S THE LAW!

Please check your local regulations regarding safety equipment.

789 Watertight First Aid Kit

Contains 16 essential items, over 85 pieces total. All in a rugged watertight buoyant container. Also included is a bonus Lifesaver #1 Safety Emergency Whistle.



774 Watertight Emergency Equipment Container

For dry storage of flares, emergency rations, matches, etc.
Net buoyancy – 1 kg. (2.2 lb.).
Now translucent to see interior contents.



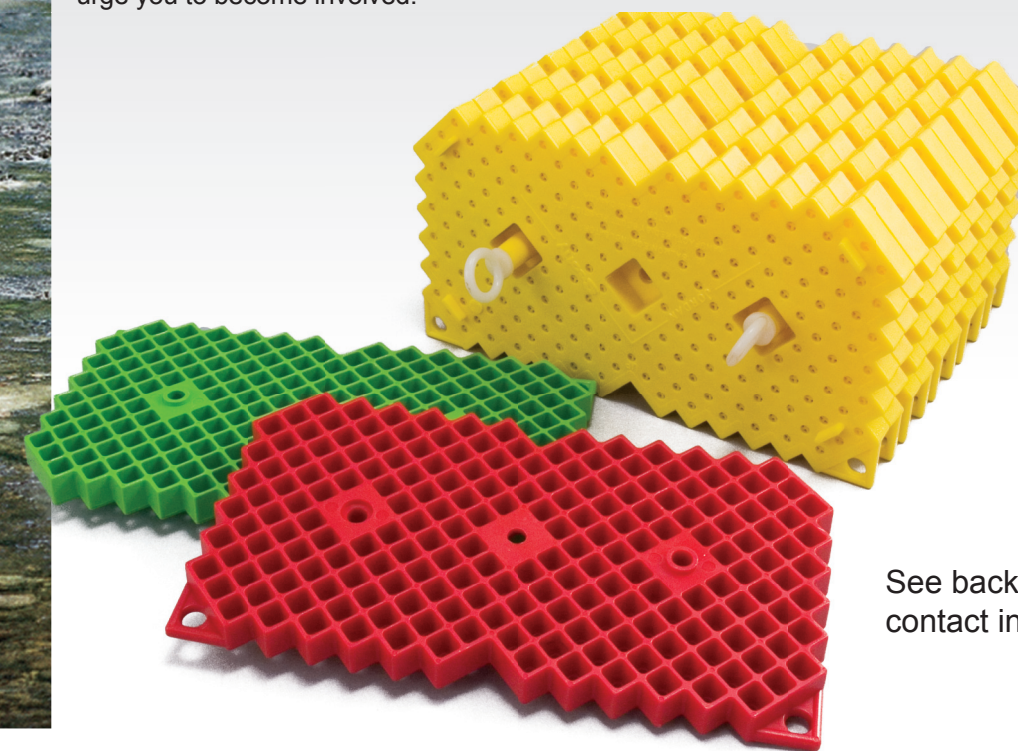
Re-Establishing And Enhancing Streams All Over The World



The Jordan/Scotty incubator, sometimes referred to as the Salmon Condominium, is a scientifically designed and tested plastic incubation unit and was developed to provide an efficient aid in the stream incubating of salmon or trout eggs. The unique design either eliminates or minimizes most of the problems experienced by natural spawning. Fungus infection is virtually eliminated and eggs are protected from predators and silt suffocation. Pilot testing indicates that survival rates from egg to fry is often better than 90% as compared to natural spawning survival rates of between 5% and 20%.

Eggs are placed into individual chambers of larger "cassettes" which can hold thousands of eggs. These units are placed into the gravel and covered. Without further maintenance, the egg grows and matures to a swimming fry at which time it leaves the incubator.

The critical need to enhance our stocks is well documented. Natural spawning has declined dramatically over the past 50 years for many reasons. Many of our spawning areas no longer exist. Many of the spawning areas that still exist are only partially effective and many of our original Salmon stocks are now extinct. The need for increased Salmon enhancement programs by volunteers has never been greater. The availability of the Jordan/Scotty Incubator, a simple yet effective incubation unit, can be of great help for our precious Salmon stream stocks and their eventual recovery. We urge you to become involved.



See back cover for contact information



60 Years of Excellence...



- Blayney Scott (standing) and Dacre Scott



Scotty
CLASSICS

- Original Blue Manual Downrigger

- Original Release Clips

For information regarding factory authorized service centers, parts, and other information please contact:

Scotty Fishing, Marine and Outdoor Products
2065 Henry Ave West
Sidney, British Columbia
Canada V8L 5Z6

Phone: (250) 656-8102
Toll Free: 1-800-214-0141
Fax: (250) 656-8126

Edition 13



In 1952, **Blayney Scott** started a small company in Victoria, British Columbia, that pioneered the use of plastics in the manufacturing of salmon fishing lures and other marine products. From humble beginnings, Scott Plastics Ltd. has evolved to produce thousands of products under the Scotty trademark which are sold to the fishing, marine, outdoor and firefighting industries worldwide. Now with markets all over North America, Europe, Australia, New Zealand and beyond, Scotty products are gaining a reputation for being top quality, but still affordable in the face of rising production costs.

The Scotty trademark has become recognized to mean product excellence. The total commitment to quality, fair pricing and unmatched service means our customers everywhere can expect reliability and satisfaction from every product that carries the Scotty name.

From production to community involvement, the Scotty name carries pride and distinction in the fishing, marine, outdoor and firefighting industries. All products are backed by years of manufacturing experience and the highest quality customer service. Excellent vendor support and a superior product have made Scotty a leader in the fishing industry. This company with small business origins has big heart and big plans. Scotty: The Way to Fish!



The Way To Fish®

www.scotty.com

Email: scotty@scotty.com

